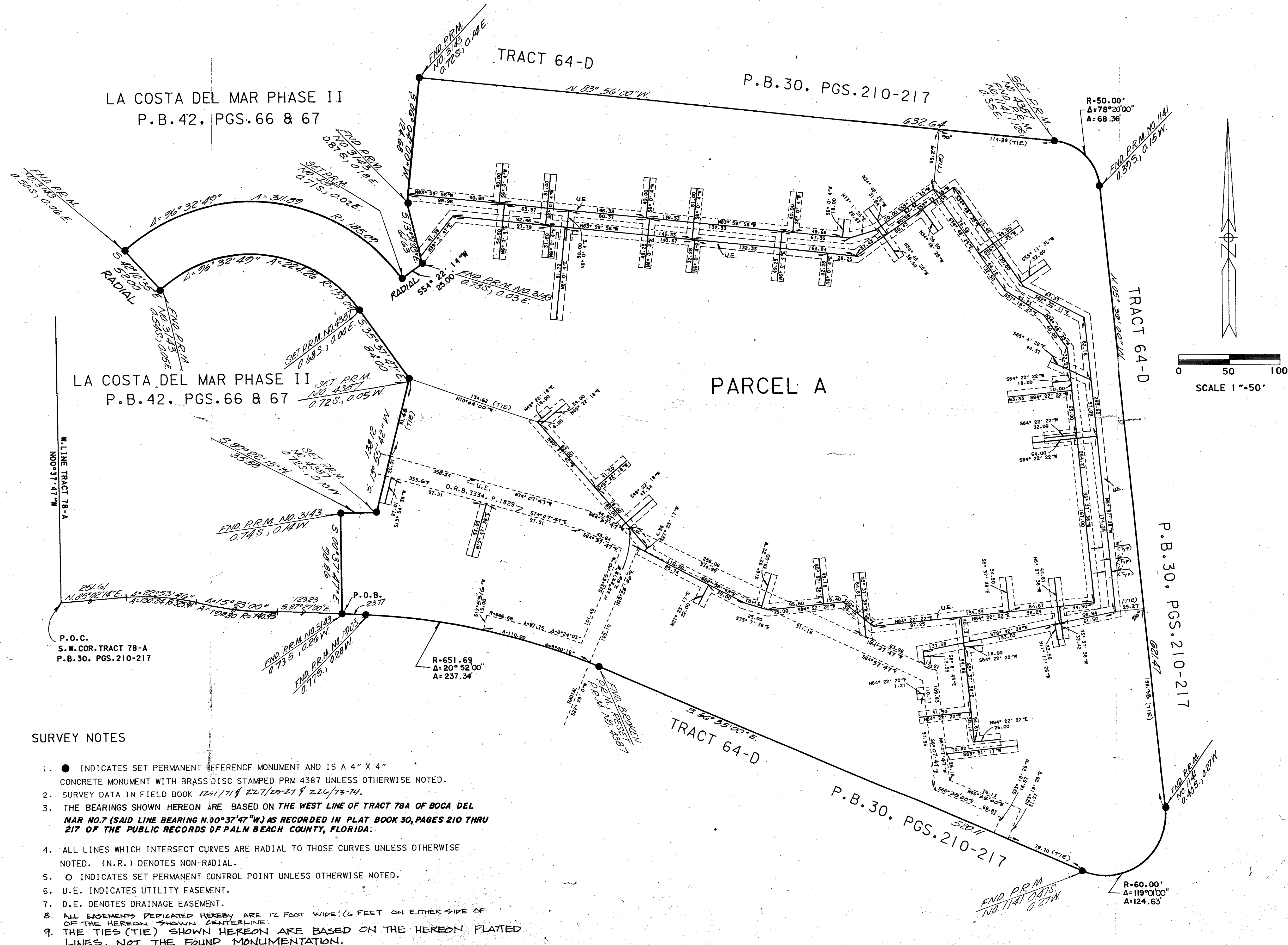


BACK BAY APARTMENTS PLAT

LYING IN SECTION 27, TOWNSHIP 47 SOUTH, RANGE 42 EAST, SHEET 2 OF 2 SHEETS
 BEING A REPLAT OF A PORTION OF TRACT 78-A, BOCA DEL MAR NO. 7, A P.U.D.
 ACCORDING TO THE PLAT THEREOF, AS RECORDED IN
 PLAT BOOK 30, PAGES 210 THRU 217, OF THE PUBLIC RECORDS OF
 PALM BEACH COUNTY, FLORIDA



SURVEY NOTES

- INDICATES SET PERMANENT REFERENCE MONUMENT AND IS A 4" X 4" CONCRETE MONUMENT WITH BRASS DISC STAMPED PRM 4387 UNLESS OTHERWISE NOTED.
- SURVEY DATA IN FIELD BOOK 1231/71 & 227/24-27 & 224/75-74.
- THE BEARINGS SHOWN HEREON ARE BASED ON THE WEST LINE OF TRACT 78A OF BOCA DEL MAR NO. 7 (SAID LINE BEARING $N 00^{\circ} 37' 47'' W$) AS RECORDED IN PLAT BOOK 30, PAGES 210 THRU 217 OF THE PUBLIC RECORDS OF PALM BEACH COUNTY, FLORIDA.
- ALL LINES WHICH INTERSECT CURVES ARE RADIAL TO THOSE CURVES UNLESS OTHERWISE NOTED. (N.R.) DENOTES NON-RADIAL.
- INDICATES SET PERMANENT CONTROL POINT UNLESS OTHERWISE NOTED.
- U.E. INDICATES UTILITY EASEMENT.
- D.E. DENOTES DRAINAGE EASEMENT.
- ALL EASEMENTS DEDICATED HEREBY ARE 12 FEET WIDE (6 FEET ON EITHER SIDE OF THE HEREON SHOWN CENTERLINE).
- THE TIES (TIE) SHOWN HEREON ARE BASED ON THE HEREON PLATTED LINES, NOT THE FOUND MONUMENTATION.

THIS INSTRUMENT PREPARED BY:
 JON V. NOLTING
 CRAVEN THOMPSON & ASSOCIATES, INC.
 5901 N.W. 31ST AVENUE
 FORT LAUDERDALE, FLA. 33309
 (305) 971-7771

BACK BAY APARTMENTS PLAT 03/102

SUBDIVISION # Back Bay Apartments Plat
 BOOK 03 PAGE 102
 FLOOD ZONE A01 FLOOD MAP # 240B
 GUND # 39 ZONING AL 84-152
 # 102 684 ZIP CODE 33433
 FUD NAME Boca Del Mar P.U.D.